

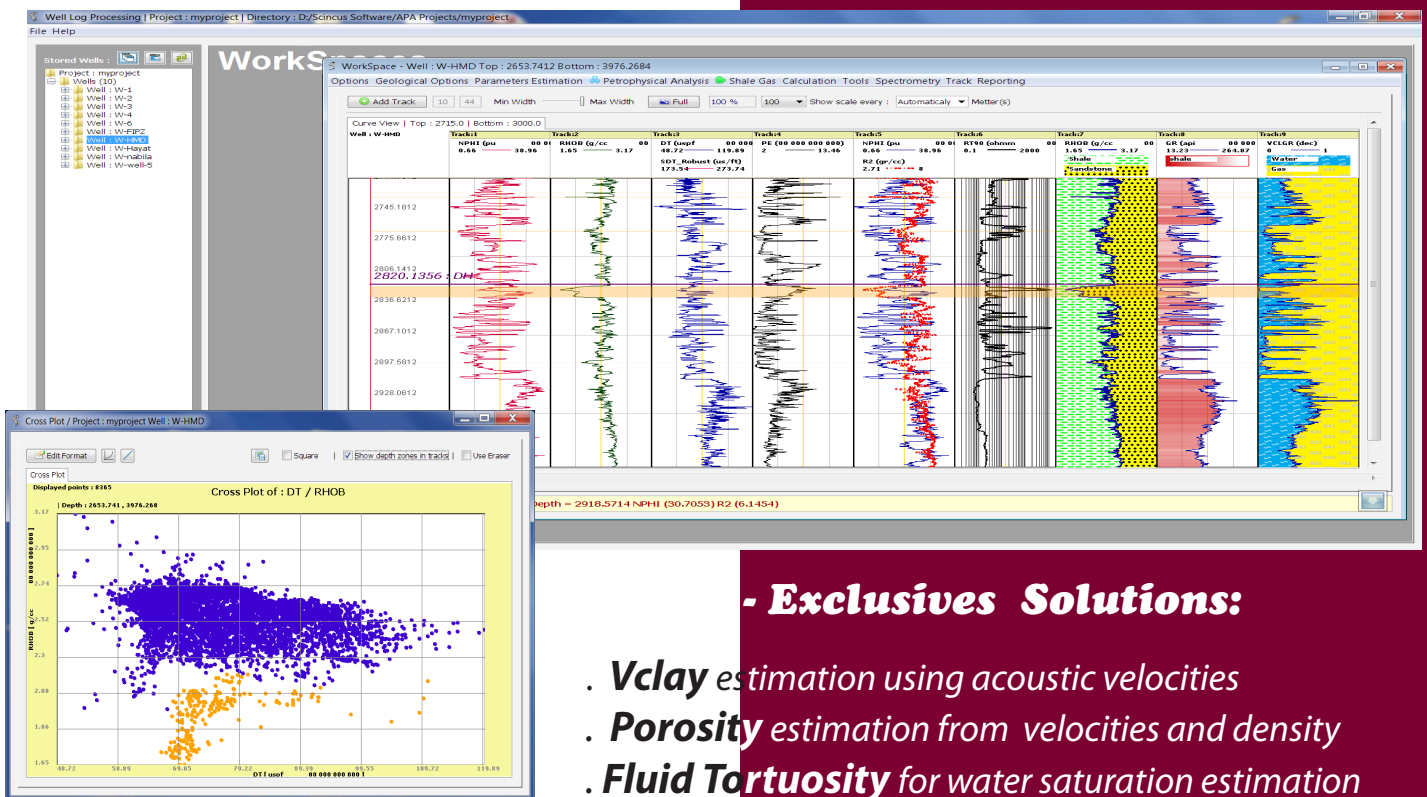
ScincusLog

Interactive Solution for Advanced Petrophysical Analysis

ScincusLog is a complete solution for advanced reservoir evaluation

Additional to basic analysis, we propose exclusive solutions helping you to give answers to all problems in complex reservoirs.

- . Log editing, splicing and smoothing
- . S velocity estimation from P velocity and porosity
- . Density generation from P velocity

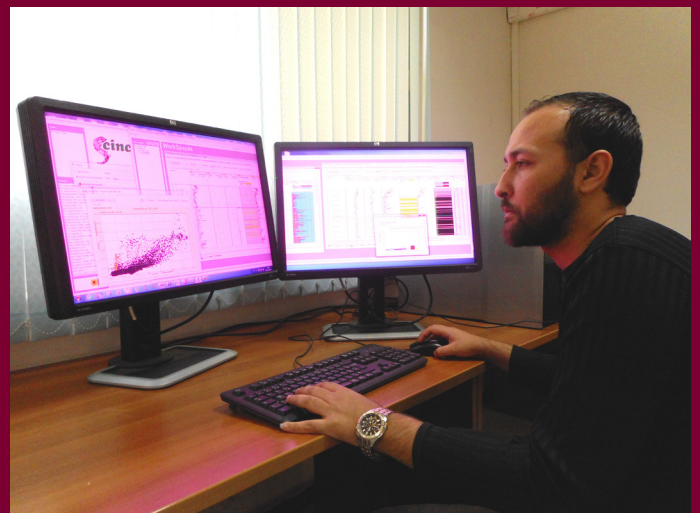


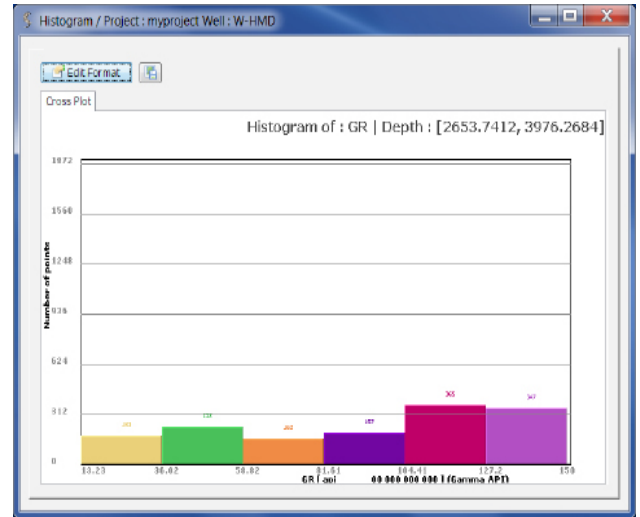
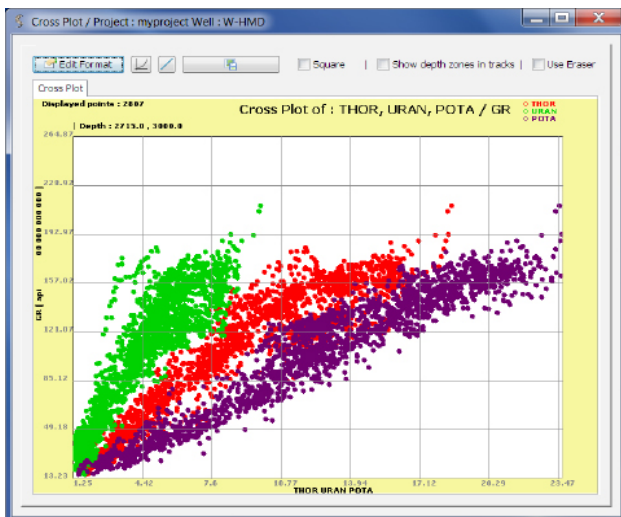
- Exclusives Solutions:

- . **Vclay** estimation using acoustic velocities
- . **Porosity** estimation from velocities and density
- . **Fluid Tortuosity** for water saturation estimation

- Main advantages:

- . Multi OS platforms
- . Interactive log processing
- . High developed mathematical user calculator
- . Multi-well sessions analysis
- . Interactive control of zones
- . Advanced multi-curves cross plots
- . Automatic generation of synthesis report
- . Integrated spectrometry analysis module





• Data Well Editing

- Well log loading and exporting (ASCII, LAS...)
- Well properties (location, elevations)
- Well deleting, renaming, adding and inserting
- Log properties (names, units, descriptions)
- Log correcting, deleting and adding

• Basic Processing

- Log splicing and smoothing
- Interactive log processing
- High developed mathematical and logical user calculator
- Basics petrophysical formulas
- Multi-well sessions analysis
- Well mapping
- Tracks, wells and crossplots image's saving and printing

• Data Generation and Calculation

- S velocity estimation (Greenberg, Castagna, Krief)
- Density estimation (Gardner, Agip Belotti, Lindseth)
- Resistivity estimation (Faust, Smith)
- Velocities conversions, Poisson coefficient and Young modulus
- Reservoir quality:
 - Porosities (Willy, Raymer Hunt...)
 - Permeability
- Reservoir deliniation:
 - Shale volume (clavier, steiber, larionov, cuttofs...)
 - Matrix volume
- Fluid identification and distribution:
 - Fluid substitution
 - Resistivity and water saturation (Archie, Simandoux, Indonisian...)
- T.O.C (Shmoker, Delta Loger)

• Advanced Petrophysics Analysis

- Clay Volume estimation using acoustic velocities
- Porosity estimation from velocities and density
- Density estimation from porosity
- Advanced T.O.C.

• Data Display

- Shading and stratigraphic column
- Tops management
- Automatic generation of synthesis report
- Mono track visualisation
- Interactive Multi track visualisation
- Basic cross plots and histograms
- Advanced multi-curves cross plots
- Interactive control of zones
- Values reading and picking

• Spectrometry

- Stratigraphic scale detection (Anoxique, Intermediaire, Oxique...)
- Stratigraphical crossplots using thorium, uranium, potasium and gamma ray

• User Data Security

- Authentication and Identification at startup
- Saving user histories
- Project's import and export
- Multi-operating system's running



Headquarters

Address: BP140 Zone Industrielle HMD, Algeria
 Phone: +213 29-79-77-00 / Fax: +213 29-79-72-12
 Email: communication@enageo.com
 Web: www.enageo.com

